

ANDBIKE

BY SEA OTTER EUROPE

La Massana
14/06 - 15/06

2025



EVENT INFORMATION



On the weekend of June 14 and 15, La Massana will host the first edition of ANDBike. The new cycling festival aims to become the perfect space for both enthusiasts and professionals to enjoy biking. ANDBike will be split across two locations: Prat Gran and Plaça de Les Fontetes, and will feature an expo area, product testing with Demobike, a sports program, and family activities throughout the weekend.

ANDBike will also be the venue for enjoying Ciclo Andorra–La Massana, the new cycling tour on the Andorran calendar, and the Ebike Tour La Massana–Andorra by Pic Negre.

LOCATION



PLAÇA DE LES FONTETES, LA MASSANA

HOW TO ARRIVE?

Address:

Plaça de Les Fontetes
AD400 La Massana, Andorra

Parc Gran del Colat – Jardí Botànic
Av. del Ravell, 11
AD400 La Massana, Andorra



La Massana is one of the seven administrative parishes of Andorra.

The town of La Massana is located in the western part of the country, about 6 km from Andorra la Vella.

By car:

From Spain:

From Barcelona: approximately 2h 45min (200 km)

- Take the C-16 to the Cadí Tunnel.
- Continue on the N-145 to the Andorran border.
- Then take the CG-1 to Andorra la Vella and the CG-3 to La Massana.

From Lleida: approximately 2h (150 km)

- Take the C-14 towards Andorra.
- Then follow the CG-1 to Andorra la Vella and the CG-3 to La Massana.

From France:

From Toulouse: approximately 2h 45min (190 km)

- Take the A66, then the N20 to Pas de la Casa.
- Cross the Envalira Tunnel and follow the signs to La Massana.

By Bus

Several bus companies connect Andorra with Spain and France.

From Spain:

- Directbus: Barcelona (Airport and Sants) – Andorra (approx. 3h)
- Alsa: Departures from Barcelona, Lleida, and Madrid
- Andbus: Barcelona – Andorra (approx. 3h)
- Recommended stop: La Massana. If not available, get off in Andorra la Vella and take a taxi or private transport to La Massana.

From France:

- Montmantell or Andbus: Departures from Toulouse and other French cities

By Plane

The nearest airports to Andorra are:

Andorra–La Seu d’Urgell Airport (LEU).

Located 25 km from Sant Julià de Lòria

Commercial flights from Madrid operated by Air Nostrum

Barcelona–El Prat Airport (BCN).

200 km from Andorra (approx. 3h by car or bus)

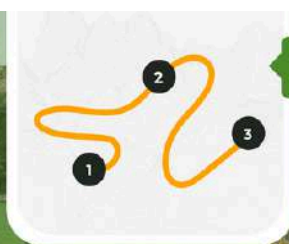
Bus connections available with Directbus or Andbus

Toulouse–Blagnac Airport (TLS).

190 km from Andorra (approx. 2h 45min by car)

Buses available from Toulouse to Andorra

Plan your trail and navigate it
from the app or your GPS



wikiloc



Create your personalized training route. Choose the places you want to pass through; Wikiloc will create a trail using the most popular stretches of trails from other community members

Try the Route Planner

USEFUL INFORMATION

Nearby Accommodation

Hotel Marco Polo – Av. de Sant Antoni, 36, AD400 La Massana, Andorra

Hotel Del Pui – Av. el Través, 5, AD400 La Massana, Andorra

Hotel Màgic La Massana – Av. El Través, 7, AD400 La Massana, Andorra

Hotel Rutllan & Spa – Av. del Ravell, 3, La Massana, Andorra

Restaurants

The ANDBike festival will feature various food trucks:

- La Suculenta
- Dylan's

Nearby Hospitals

Nostra Senyora de Meritxell Hospital – Av. Fiter i Rossell, Escaldes-Engordany

La Massana Medical Center – Av. Sant Antoni, 35, La Massana

Tourist Office

Phone: (+376) 835 693

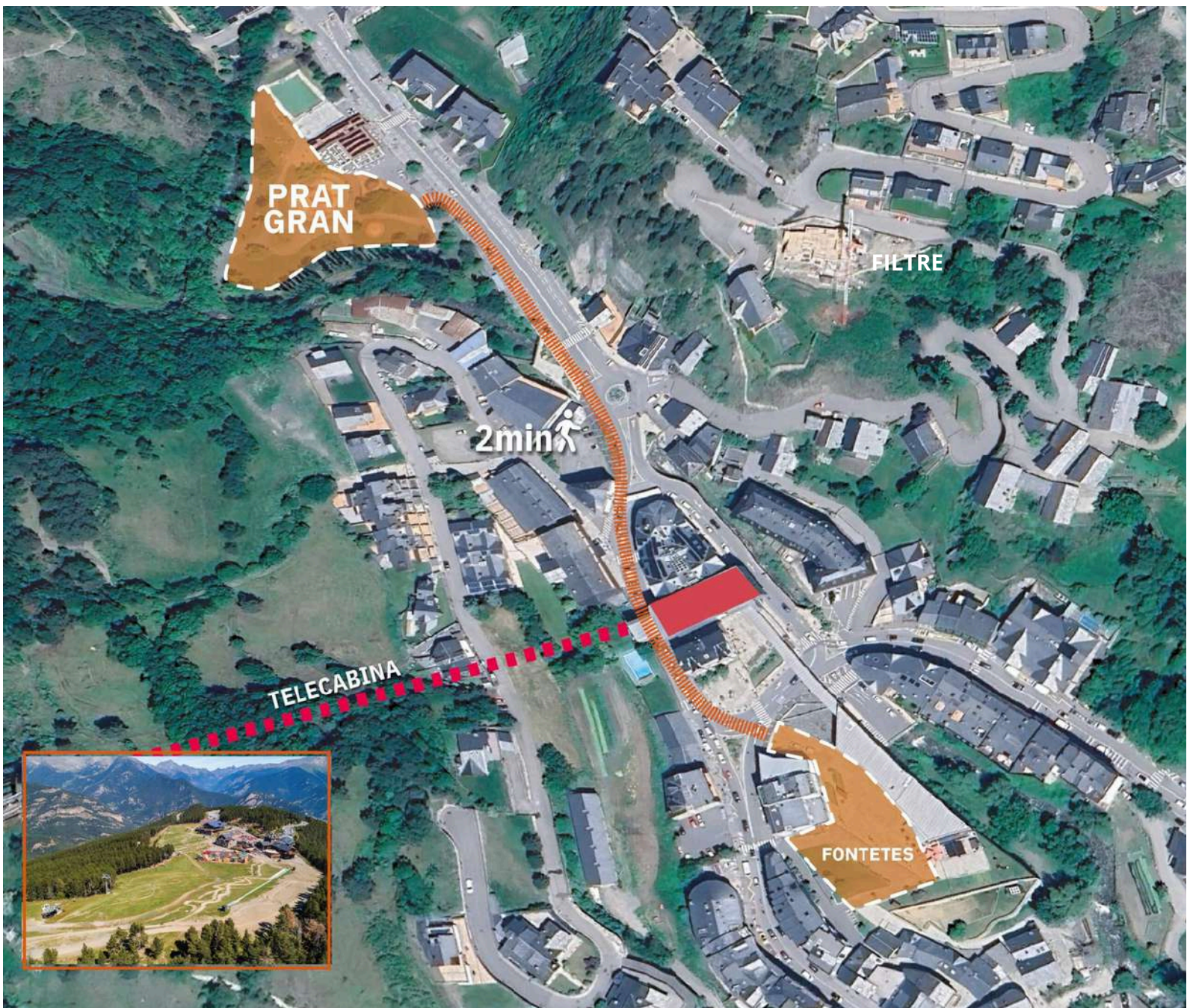
[More information](#) about La Massana.

EVENT MAP

ANDBIKE

BY SEA OTTER EUROPE

LA MASSANA, ANDORRA



MAIN SPONSOR



OFFICIAL SPONSOR

Creand[®]
Crédit Andorra

SUPPORTING

Andorra



SHIMANO
CICLO ANDORRA
SEA OTTER EUROPE
GARMIN

OFFICIAL NUTRITION CICLOANDORRA



OFFICIAL JERSEY CICLOANDORRA

HEMÒN

OFFICIAL SPONSOR EBIKE TOUR - ANDORRA



ORGANIZER

OCIANDSPORT
OUTDOOR EXPERIENCES

EVENT PROGRAM

Friday, June 13

3:00 PM – 7:00 PM Opening of the Ciclo Andorra race office (Plaça de les Fontetes).

Saturday, June 14

7:30 AM – 8:30 AM Bib collection for Ciclo Andorra – La Massana (Plaça de les Fontetes).

9:00 AM Start of Ciclo Andorra – La Massana (Plaça de les Fontetes)

10:00 AM Festival opens / Expo area / Gondola / Demobike open

10:00 AM – 8:00 PM Race office open for E-bike La Massana–Andorra (Prat Gran)

10.30 AM - 1.30 PM 'Pintacares' and draw your bike (Prat Gran)

11.00 AM loga Komorebi

12.00 AM - 2.00 AM DJ Richy Vuelcom (Prat Gran)

4:30 PM Demobike closes (DH / Enduro / MTB)

4:30 PM Last gondola ride

4.30 PM - 6.00 PM DJ Richy Vuelcom (Prat Gran)

5:00 PM Gondola closes

5:00 PM – 8:00 PM "After Bike" celebration

6:00 PM Talk with Carlos Verona

6:00 PM Last reservation for Demobike (E-bike and Road)

6:45 PM 18.45h music Duality (Prat Gran)

8:00 PM Expo area closes

Sunday, June 15

8:00 AM – 8:30 AM Race office open for E-bike La Massana – Andorra

9:00 AM Start of E-bike La Massana – Andorra

9:30 AM Festival opens / Expo area opens

10:00 AM Demobike and gondola open

10.00 AM loga Komorebi Prat Gran)

11.00 AM - 1.00 PM 'Pintacares' and draw your bike (Prat Gran)

12.00 PM - 2.00 PM DJ Richy Vuelcom (Prat Gran)

1:30 PM Last gondola ride

2:00 PM Gondola closes

2:30 PM Expo area and Demobike close

2:30 PM Festival ends

A cyclist in a dark jersey and helmet is riding a road bike on a paved, winding road. The road curves to the right. The background is a steep, rocky hillside covered with green trees and shrubs. A large, stylized shield logo is overlaid on the upper half of the image. The shield has a blue border and a white center. Inside the shield, the text "CICLO ANDORRA" is written in bold, white, sans-serif capital letters. Below this, a white banner with a blue border contains the text "LA MASSANA" in bold, blue, sans-serif capital letters.

**CICLO
ANDORRA**

LA MASSANA



Ciclo Andorra–La Massana is Andorra’s new non-competitive cycling tour. It's the perfect opportunity to enjoy some of the country's most iconic roads and mountain passes—climbing the same peaks where many of the world’s top cyclists regularly train.

The event, taking place on June 14, offers three different routes, all sharing the same fun and relaxed spirit, but designed to suit participants with varying levels of physical fitness.

14th June - START: 9:00h (Plaça de les Fontetes)

Finish: Plaça de les Fontetes

Paella served at the finish line

EXCLUSIVE HEMON JERSEY included with registration.



MAIN SPONSOR



OFFICIAL SPONSOR

Creand[®]
Crédit Andorra

SUPPORTING



SHIMANO
CICLO ANDORRA
SEA OTTER EUROPE
GARMIN

OFFICIAL NUTRITION CICLOANDORRA



OFFICIAL JERSEY CICLOANDORRA

HEMÓN

OFFICIAL SPONSOR EBIKE TOUR - ANDORRA



ORGANIZER

LOCIAANDSPORT
OUTDOOR EXPERIENCES

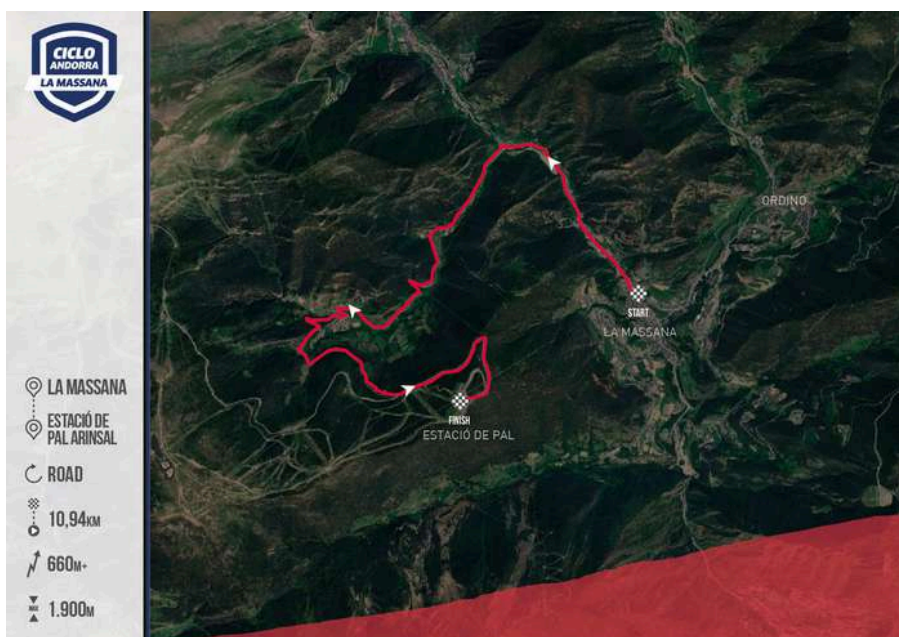
TRACKS



1 PORT

A route with a single climb—perfect for those who are just getting started. The ascent begins shortly after the first pedal strokes, with a steady but moderate incline that gradually takes you up to nearly 2,000 meters of altitude.

The reward at the top is well worth the effort: you'll be greeted with stunning views of the Pal-Arinsal ski resort.



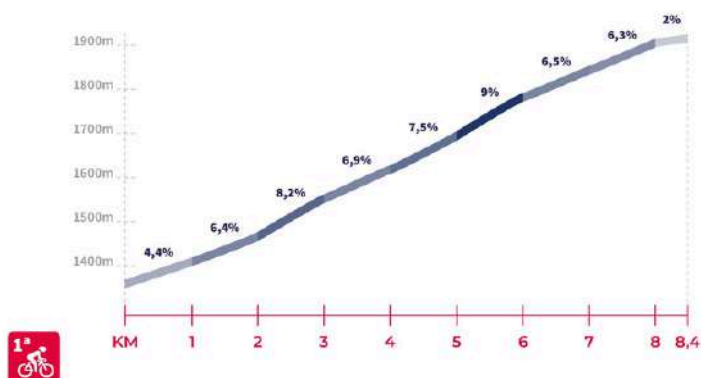
[Check the route](#)



ERTS - ESTACIÓ PAL ARINSAL

ESTACIÓ PAL ARINSAL

8,4 KM 560m 5,7%



Feed Zone (SOLID and LIQUID):

- Estació de Pal - KM 10,94

MAIN SPONSOR



OFFICIAL SPONSOR



SUPPORTING



OFFICIAL NUTRITION CICLOANDORRA



OFFICIAL JERSEY CICLOANDORRA



OFFICIAL SPONSOR EBIKE TOUR - ANDORRA



ORGANIZER



2 PORTS



A fantastic ride to explore the heart of the Pyrenees. Cycle along Andorra's roads to reach the summit of the Port d'Ordino, then enjoy an endless descent passing through several local villages. Finally, face the day's last challenge, the Collada de Beixalís: a tough series of switchbacks that gradually ease as you reach the very top.



[Check the route](#)

Feed zones (SOLID AND LIQUID)

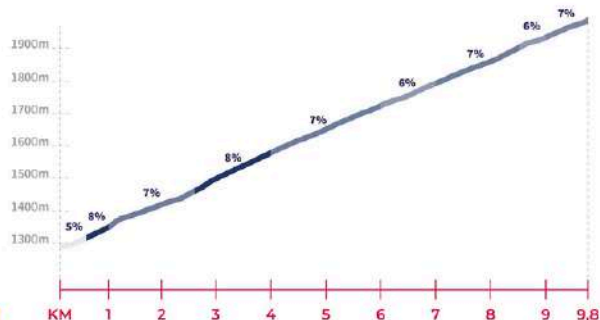
- Coll d'Ordino - KM 12
- Collada de Baixalís - KM 33,5



ORDINO - COLL D'ORDINO

COLL D'ORDINO

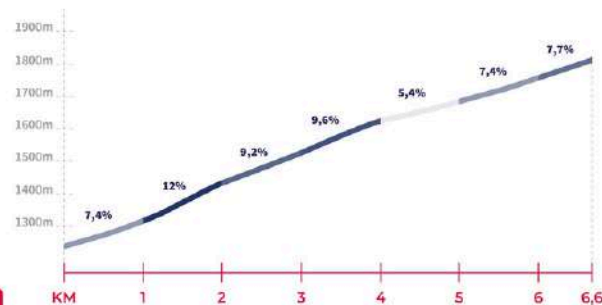
9,8KM 696m 7,1%



ENCAMP - COLLADA DE BEIXALÍS

COLLADA DE BEIXALÍS

6,6KM 556m 8,4%



MAIN SPONSOR



OFFICIAL SPONSOR



SUPPORTING



OFFICIAL NUTRITION CICLOANDORRA



OFFICIAL JERSEY CICLOANDORRA



OFFICIAL SPONSOR EBIKE TOUR - ANDORRA



ORGANIZER



3 PORTS



Finally, the 3-climb route opens the door to pedal over Andorra's three most iconic summits. Along with Ordino and the Collada de Beixalís, you'll face the final challenge of the Pal ski resort. All of this leads back to ANDBike, where you can continue enjoying the festival's wide range of activities. ANDBike: a festival made for you and your friends.

Check the route

Feed Zones (SOLID AND LIQUID)

- Coll d'Ordino - KM 12
- Collada de Baixalís - KM 33,5
- Estació de Pal - KM 53,88



ORDINO - COLL D'ORDINO

COLL D'ORDINO
9,8KM 195m 7,4%



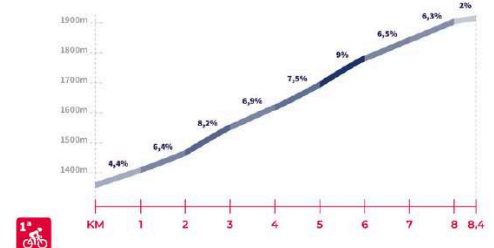
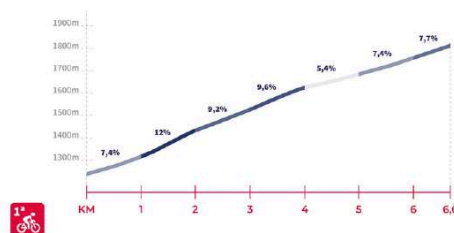
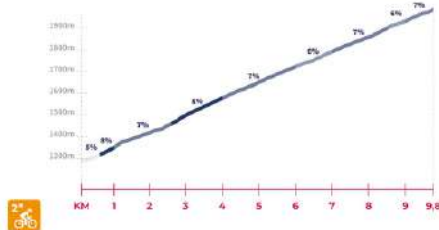
ENCAMP - COLLADA DE BEIXALÍS

COLLADA DE BEIXALÍS
6,6KM 356m 8,4%



ERTS - ESTACIÓ PAL ARINSAL

ESTACIÓ PAL ARINSAL
8,4KM 560m 6,7%



MAIN SPONSOR



OFFICIAL SPONSOR



SUPPORTING



OFFICIAL NUTRITION CICLOANDORRA



OFFICIAL JERSEY CICLOANDORRA



OFFICIAL SPONSOR EBIKE TOUR - ANDORRA



ORGANIZER





REMINDER

Ciclo Andorra–La Massana is a non-competitive cycling tour open to traffic, so participants must always obey the traffic laws.

It is essential to follow all instructions given by the police.

Extra caution is required when passing through villages with narrow roads to avoid accidents.

Eco-responsibility

It is very important not to leave any waste in nature and to use the bins provided at each refreshment point; this way, we will respect the environment, flora, and fauna.

MAIN SPONSOR



OFFICIAL SPONSOR



SUPPORTING



OFFICIAL NUTRITION CICLOANDORRA



OFFICIAL JERSEY CICLOANDORRA



OFFICIAL SPONSOR EBIKE TOUR - ANDORRA



ORGANIZER







The best way to discover Andorra's cycling paradise with your e-MTB. Explore the beautiful trails of La Massana and its surroundings on a fun ride that lets you experience one of Europe's natural sanctuaries. Two routes designed to meet the needs of all cyclists.

The Ebike Tour is designed for enjoying a pleasant day of cycling, surrounded by people who share your passion for fun, exploring new routes, and staying healthy in a relaxed and friendly atmosphere.

Non-competitive ride.

June 15 – Start: 9:00 AM (Plaça de les Fontetes)

Arrival at Plaça de les Fontetes

Paella served at the finish line



EXCLUSIVE POLO included with registration

**YOUR CYCLING REFERENCE
IN LA MASSANA**

PIC NEGRE 11: AV/SANT ANTONI 5, CABLE CAR EXIT
PIC NEGRE 12: AV/SANT ANTONI 6, CABLE CAR EXIT



MAIN SPONSOR



OFFICIAL SPONSOR



SUPPORTING



OFFICIAL NUTRITION CICLOANDORRA



OFFICIAL JERSEY CICLOANDORRA



OFFICIAL SPONSOR EBike TOUR - ANDORRA



ORGANIZER

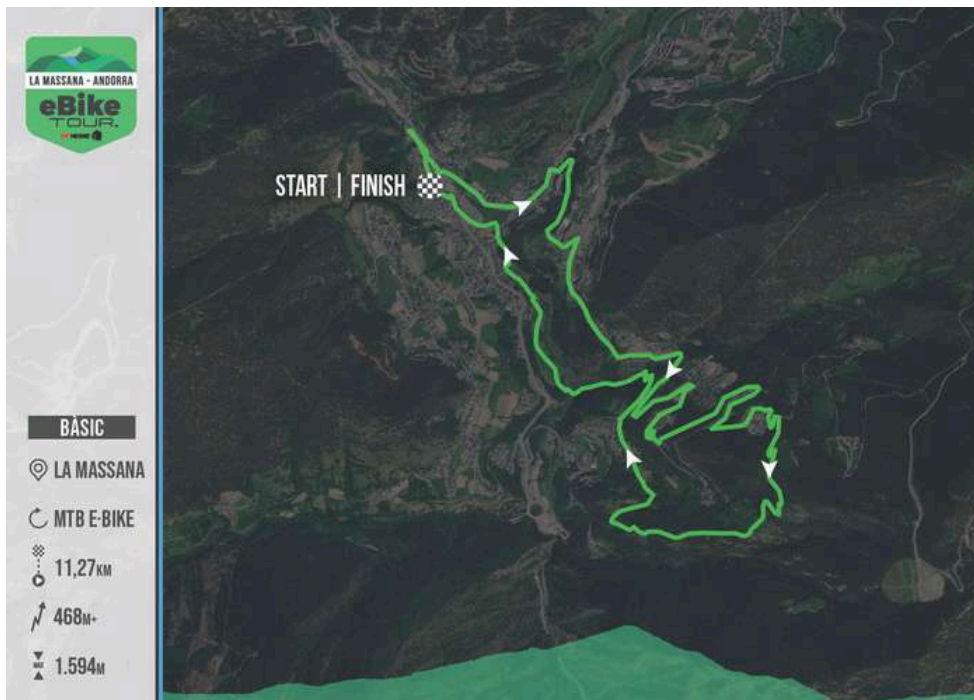


TRACKS



BASIC

An ideal route for e-bike enthusiasts looking to enjoy a fun day on the pedals. This non-competitive ride welcomes everyone who wants to stay healthy and connect with nature alongside other e-MTB lovers. Let yourself be swept up by an unbeatable atmosphere and a unique setting for riding your electric bike.



[Check the route](#)



MAIN SPONSOR



OFFICIAL SPONSOR



SUPPORTING



OFFICIAL NUTRITION CICLOANDORRA



OFFICIAL JERSEY CICLOANDORRA



OFFICIAL SPONSOR EBIKE TOUR - ANDORRA



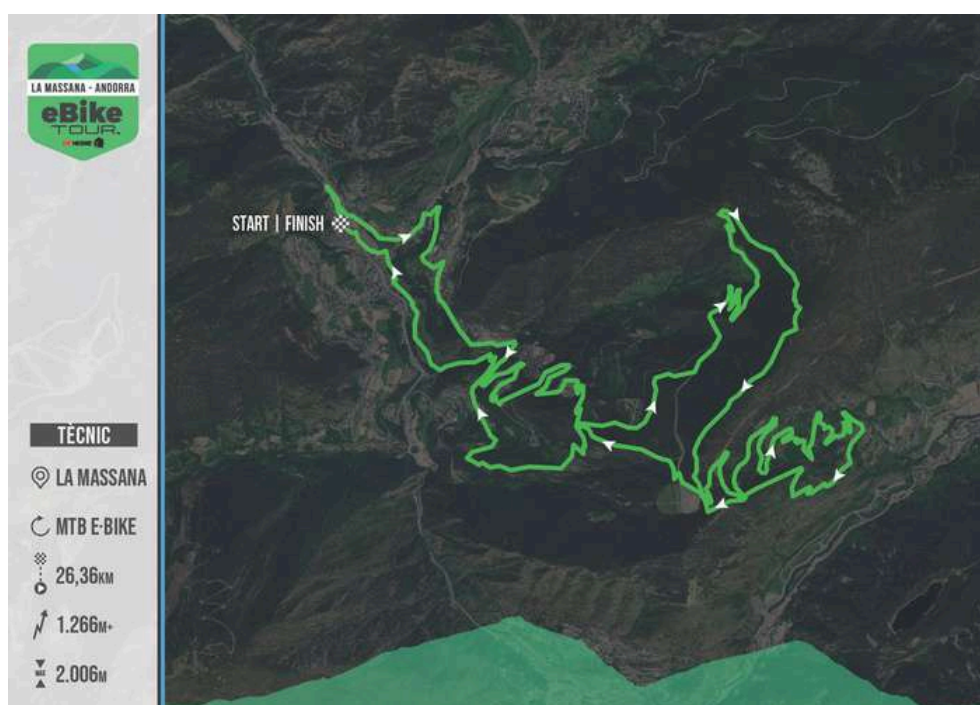
ORGANIZER





TECHNICAL

A route designed for participants who want to enjoy a more technical ride. The fun aspect still sets the tone for this outing, which also includes some spicier sections. Come and explore this circular trail and discover a fantastic area for e-MTB riding.



Check the route

Feed zone (SOLID AND LÍQUID): KM 13



MAIN SPONSOR



OFFICIAL SPONSOR



SUPPORTING



OFFICIAL NUTRITION CICLOANDORRA



OFFICIAL JERSEY CICLOANDORRA



OFFICIAL SPONSOR EBIKE TOUR - ANDORRA



ORGANIZER



MAIN SPONSOR



OFFICIAL SPONSOR



SUPPORTING



OFFICIAL SPONSORS CICLO ANDORRA – LA MASSANA



HEMŌN

OFFICIAL SPONSOR EBIKE TOUR – ANDORRA



ORGANIZER

